

SR. CONDOMINIUM COMPLEX  
PHASE I

OCC: R-2  
CONST. TYPE: III-B, SPRINK

55,701 SF/PER FLOOR  
4: STUDIO UNITS/PER FLOOR  
30: 1-BEDROOM UNITS/PER FLOOR  
6: 2-BEDROOM UNITS/PER FLOOR

SR. CONDOMINIUM COMPLEX  
PHASE II

OCC: R-2  
CONST. TYPE: III-B, SPRINK

55,701 SF/PER FLOOR  
4: STUDIO UNITS/PER FLOOR  
30: 1-BEDROOM UNITS/PER FLOOR  
6: 2-BEDROOM UNITS/PER FLOOR

ASSISTED LIVING  
PHASE I  
55,432 SF/PER FLOOR  
32: STUDIO UNITS/PER FLOOR  
20: 1-BEDROOM UNITS/PER FLOOR

OCC: R-2.1  
CONST. TYPE: III-A SPRINK

ASSISTED LIVING  
PHASE II  
55,432 SF/PER FLOOR  
32: STUDIO UNITS/PER FLOOR  
20: 1-BEDROOM UNITS/PER FLOOR

OCC: R-2.1  
CONST. TYPE: III-A SPRINK

RESTAURANT/KITCHEN  
&  
MULTI-PURPOSE  
ROOM  
25,200 SF

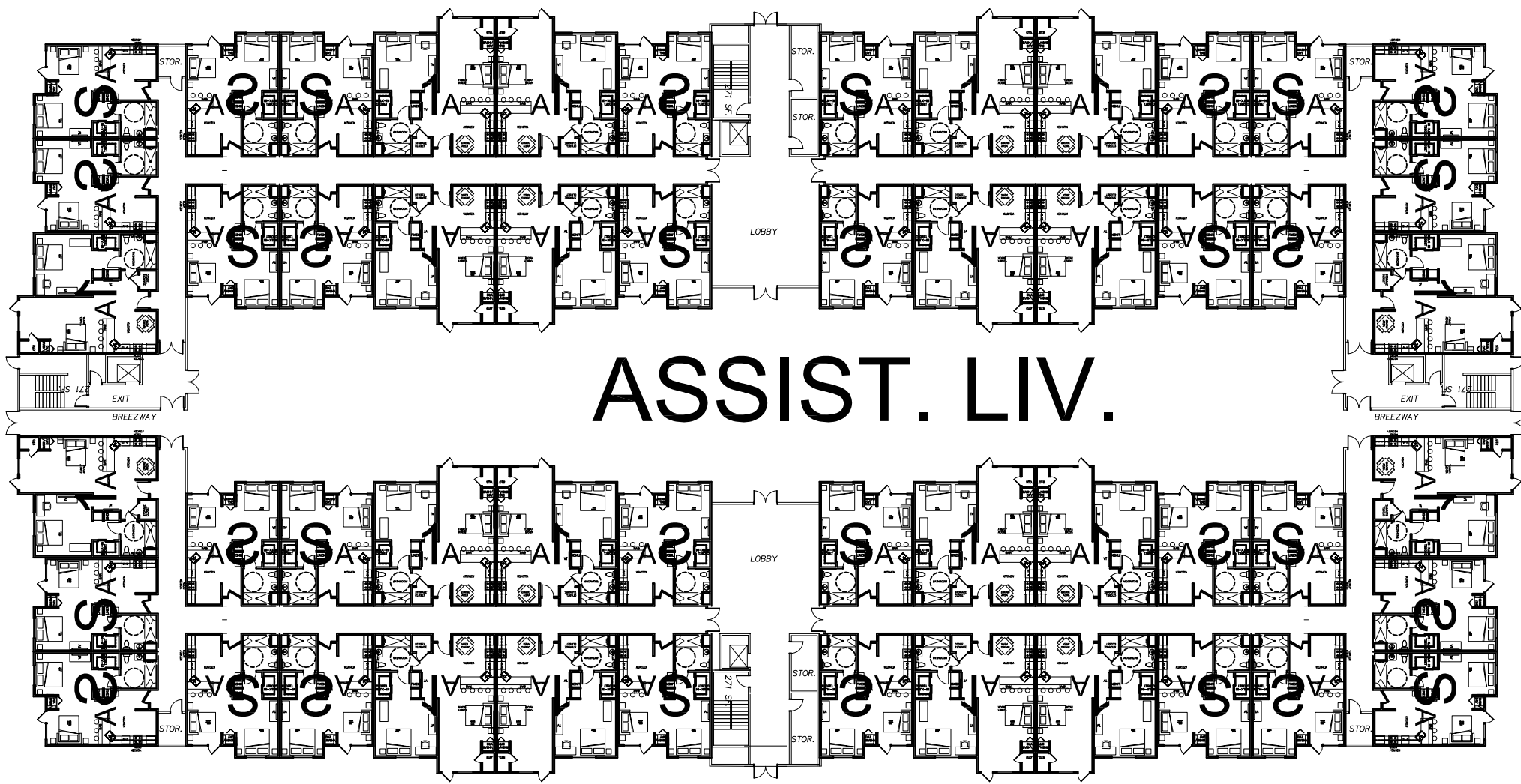
ADULT DAY  
CARE  
20,500  
SF/FLOOR

RESTAURANT/  
KITCHEN

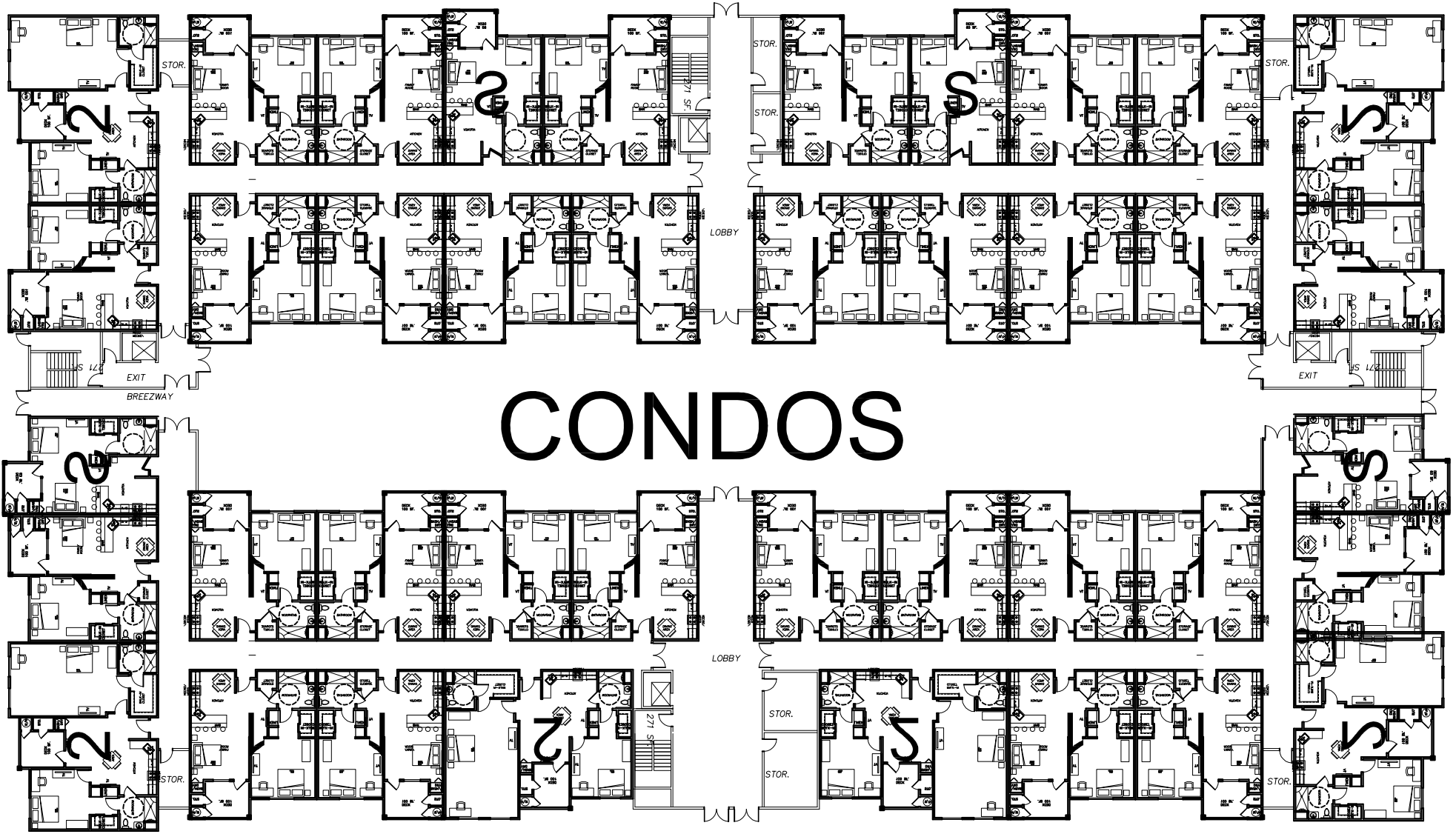
ADULT DAY  
CARE  
22,500  
SF/FLOOR

OUTDOOR  
COVERED  
PATIO DINING  
AREA

RECEPTION & DOCTORS OFFICES  
20,500 SF/FLOOR



# ASSIST. LIV.



# CONDOS

SR. CONDOMINIUM COMPLEX  
PHASE I

OCC: R-2  
CONST. TYPE: III-B, SPRINK

55,701 SF/PER FLOOR  
4: STUDIO UNITS/PER FLOOR  
30: 1-BEDROOM UNITS/PER FLOOR  
6: 2-BEDROOM UNITS/PER FLOOR

SR. CONDOMINIUM COMPLEX  
PHASE II

OCC: R-2  
CONST. TYPE: III-B, SPRINK

55,701 SF/PER FLOOR  
4: STUDIO UNITS/PER FLOOR  
30: 1-BEDROOM UNITS/PER FLOOR  
6: 2-BEDROOM UNITS/PER FLOOR

ASSISTED LIVING  
PHASE I

55,432 SF/PER FLOOR  
32: STUDIO UNITS/PER FLOOR  
20: 1-BEDROOM UNITS/PER FLOOR

OCC: R-2.1  
CONST. TYPE: III-A SPRINK

ASSISTED LIVING  
PHASE II

55,432 SF/PER FLOOR  
32: STUDIO UNITS/PER FLOOR  
20: 1-BEDROOM UNITS/PER FLOOR

OCC: R-2.1  
CONST. TYPE: III-A SPRINK

RESTAURANT/KITCHEN  
&  
MULTI-PURPOSE  
ROOM  
25,200 SF

ADULT DAY  
CARE  
20,500  
SF/FLOOR